

FISH YOUTH

Brand New Design

POUR OVER KETTLE

THE STYLE



Good-looking Design practical usage



Easy for Green Hands



Superior Quality



Ergonomics Design



Double Patent

More Colors For your options

White / Black / Pink / Blue



Easy To Control

90° Straight down small Water Flow

Through the manual adjustments and polishing, we design steady water flow structure, make water flow more fluently with no effect from the water pressure.



Patented Spout Design

Special spout, through repeatedly adjustments processing by TIMEMORE designers, become a unique design in the coffee universe.

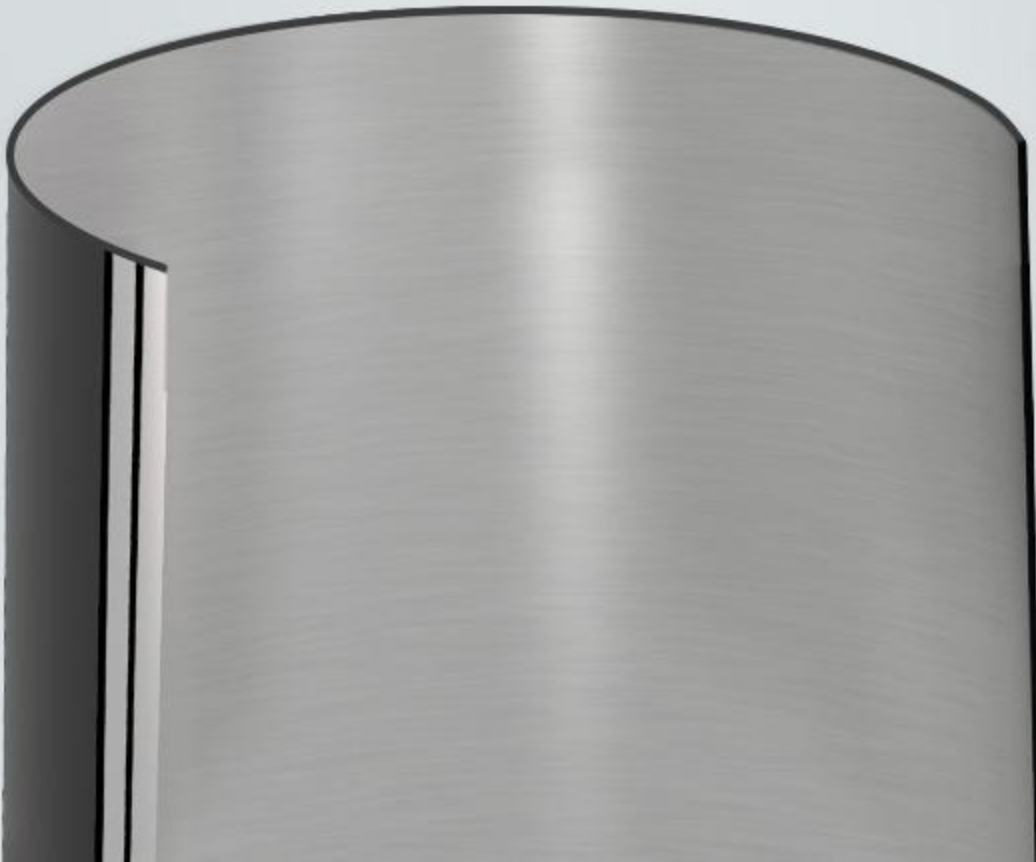
Patent No. : 201620199042.7





304 Stainless Steel Healthy and Safe

With strict material selection 304 stainless steel and solid wood, To ensure the quality of kettle



Anti-Scalding Solid Wood Handle

Comfortable Hand Grip

Black Kettle with walnut handle

Other colors kettles with white oak handle

Ergonomics design with
comfortable hand grip

Ergonomics Distance from handle
to body make it safe to hold



Ergonomics Design Easy To Control







More Colors for your Options

Black

Blue

White

Pink



Product Parameters

Product Name: FISH YOUTH Pourover Kettle

Capacity: 700ml

Diameter: Lid 9.2cm / Bottom 10cm

Material: 304 Stainless Steel, wood

Weight: Around 542g

Made in China

* The lid will be hot for using in a long time, please order carefully.



Leading patents and R&D capabilities

The only brand specialized in specialty coffee equipment
with continuous original design capability
20+ patents Newly released 10+ per year





Water
COFFEE'S BEST FRIEND

水 · 咖啡 · 朋友

¥10

12







万物
03 空之神

1. 空之神 11. 空之神
2. 空之神 11. 空之神
3. 空之神 11. 空之神

